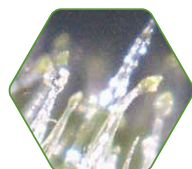


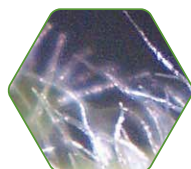
# EFFECTS OF SILICON on Trichome Development



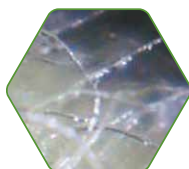
Nicotiana rustica  
(Indian Tobacco)



MIX



STANDARD  
MIX



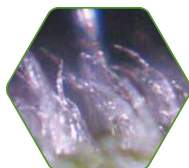
COMPETITOR  
MIX



MIX



STANDARD  
MIX



COMPETITOR  
MIX

## INDIAN TOBACCO

Trichomes examined 6 weeks after transplant

### Trichomes on Flowers

- Trichomes of RESILIENCE® plants had large, well-developed "heads" that were full with secretions (yellow-green color).
- The trichomes on plants that were grown in non-RESILIENCE® mixes did not have any heads.

### Trichomes on Petioles

- Trichomes of RESILIENCE® plants had large, well-developed "heads" that were full with secretions.
- With Standard Mix, trichome heads were smaller and most were empty.
- Competitor mix trichomes did not have any heads.

## SOLUTIONS FOR GROWERS



Sun Gro Horticulture offers products that will help you grow the highest quality plants for your customers. Backed by our superior technical support and research personnel, we have the products that will fit your needs.

### SUNSHINE® Professional Mixes

- The most consistent growing media, made with select Canadian sphagnum peat moss, aggregates and nutrients.
- Sun Gro Horticulture's wetting agent that wets more thoroughly and lasts longer.

### METRO-MIX® Professional Mixes

- The Metro-Mix lineup offers a broad range of applications ranging from small cell-packs to large containers.
- All formulas are pH adjusted, contain a nutrient starter charge and our long-lasting wetting agent.

### TECHNIGRO® Water-Soluble Fertilizers

- The most soluble fertilizer on the market with added sulfur and magnesium in many formulas for greener, healthier growth.
- Packaged in a thick plastic bag for extra protection against hardening and ease of handling.

### sungro Analytical Services

- A comprehensive tissue, water and media analysis to provide the answers you need.
- Presented in the easy to understand test tube format for a quick interpretation of media and tissue analyses.
- Highly trained grower specialists and district sales managers provide solutions to your problems.



Call your Sun Gro representative  
for more information.

**1 800 PEAT MOSS**  
(1-800-732-8667)

**sungro**  
HORTICULTURE  
Our Expertise is Growing®



responsible peatland  
management



[www.sungro.com](http://www.sungro.com)

© 2022 Sun Gro Horticulture Canada Ltd. All Rights Reserved.

® Sun Gro, RESILIENCE, Sunshine, Technigro, Metro-Mix and Our Expertise is Growing are registered trademarks of Sun Gro Horticulture Canada Ltd.

™ It's already in the mix is being used as a trademark of Sun Gro Horticulture Canada. Ltd.

# growing

annuals, perennials, vegetables, herbs,  
cultivation or hemp?



## RESILIENCE® - a beneficial plant substance that may make a plant stronger\*!

Plants grown with RESILIENCE®, our  
trade name for silicon, already in the mix,  
may result in\*:

- Earlier flowering
- Better root growth
- Longer time to wilt
- Increased stem diameter
- Quicker recovery from infrequent watering



It's *already*  
in the mix™

\*Results will vary by plant  
type and grower practices.



## Annuals



*Pelargonium hortorum*  
**Geranium**  
8 weeks post transplant



*Antirrhinum majus*  
**Snapdragon**  
6 weeks post transplant



## Perennials



*Rudbeckia hirta*  
4 days after last watering



*Phlox paniculata*  
8 days after last watering



## Plug Production



**Germination Mix -  
288 Plug Trays  
Broccoli**



**More Compact -  
Sturdier Plants  
Melon**



## Poinsettias



*Euphorbia pulcherrima*  
**Poinsettia**  
Week 47: 12 weeks after pinch to 5 nodes



*Euphorbia pulcherrima*  
**Poinsettia**  
7 days after water was withheld



## Natural & Organic

**Germination Mix - 288 Plug Trays  
Tomato**



**More Compact - Sturdier Plants  
Basil**



**Sunshine Mix #15 (Peat Based) Mixes  
Basil**

